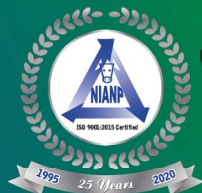


Prevention of Corona Pandemic (COVID-19)



FOR STAFF WORKING IN RESEARCH INSTITUTES & VETERINARY UNITS



ADVISORY



Personal hygiene.
Cleaner
working place.
Wash with 1%
sodium
hypochlorite
solution.



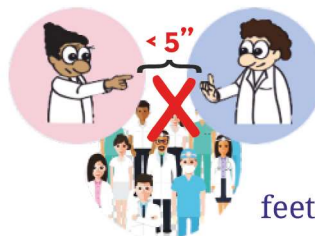
In laboratory use
apron and hand
gloves.



Wash hands with
soap and water at
frequent interval.
Use 70% alcohol.



Avoid hand shaking
with others, instead
use signs.



Avoid
working in
group. Keep
a social
distance of 5
feet and more.



Use hand
Kerchief while
coughing and
sneezing, .
Antiseptic
solution for
hand wash.

Avoid touching objects
and surface.



Consume
nutritious diet.



Wear full shirt, cover
whole body, wear face
mask.

Sick staff refrain
from duty.

